



# Feed4Food Knowledge Hub

Klervie Toczé, Vrije Universiteit Amsterdam

23-03-2026, online



This work is licensed under a [Creative Commons Attribution-ShareAlike 4.0 International License](https://creativecommons.org/licenses/by-nc-sa/4.0/)

FEED4FOOD project, Grant Agreement n° 101069506, has been funded by: National Centre for Research and Development (Poland), Research and Innovation Foundation (Cyprus), Dutch Research Council (Netherlands) General Secretariat for Research and Innovation (Greece), UE Fiscdi (Romania) under the Driving Urban Transitions Partnership, which has been co-funded by the European Union



Promoting Sustainable,  
Inclusive, and Healthy  
City Food Systems.

# Outline

- **Presentation of the Knowledge Hub**
- **Demonstration: Harvesting data**
- **Future works**

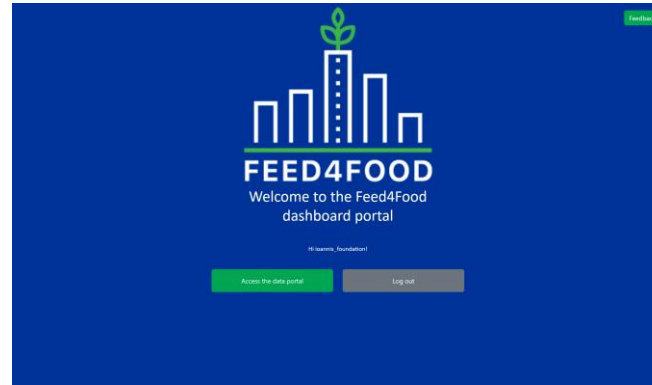




01

# THE FEED4FOOD KNOWLEDGE HUB

# Overview



One website  
<https://feed4food.labs.vu.nl/>



# Key Performance Indicators



- Economic viability
- Effective training
- Pesticide use
- Nutritious food production
- Native varieties cultivation
- Water reuse

KC3 – Nutritious food production					
Goal	Critical Success Factor	Key Performance Indicator		Metric(s)	Measure(s)
Eco-friendly urban farming	Achieve nutritious food production in an urban environment by 2026	Nutritious food production f (Production color profile, Production nutrition profile)		<ul style="list-style-type: none"> <li>• Color profile of plant species cultivated f(MC1,MR3)</li> <li>• Nutrition profile of the production f(MC1,MR3, MR5)</li> </ul>	MC1 - Production per product type MR3 - Characteristics per product MR5 - Daily calory and nutrient requirements for an adult
		Target	Action		
		All colors covered	Increase the diversity of plant varieties (number)		
		All relevant nutrients covered in sufficient quantities	Adjust the cultivation plan for quantities		

# Entering data



- Different forms for the different types of data
- Corresponding to the measures needed for the Key Performance Indicators (KPIs)
- 10 different reports

**Production Report**

City\*  Location\*  Garden\*

Production date\*

**Products**

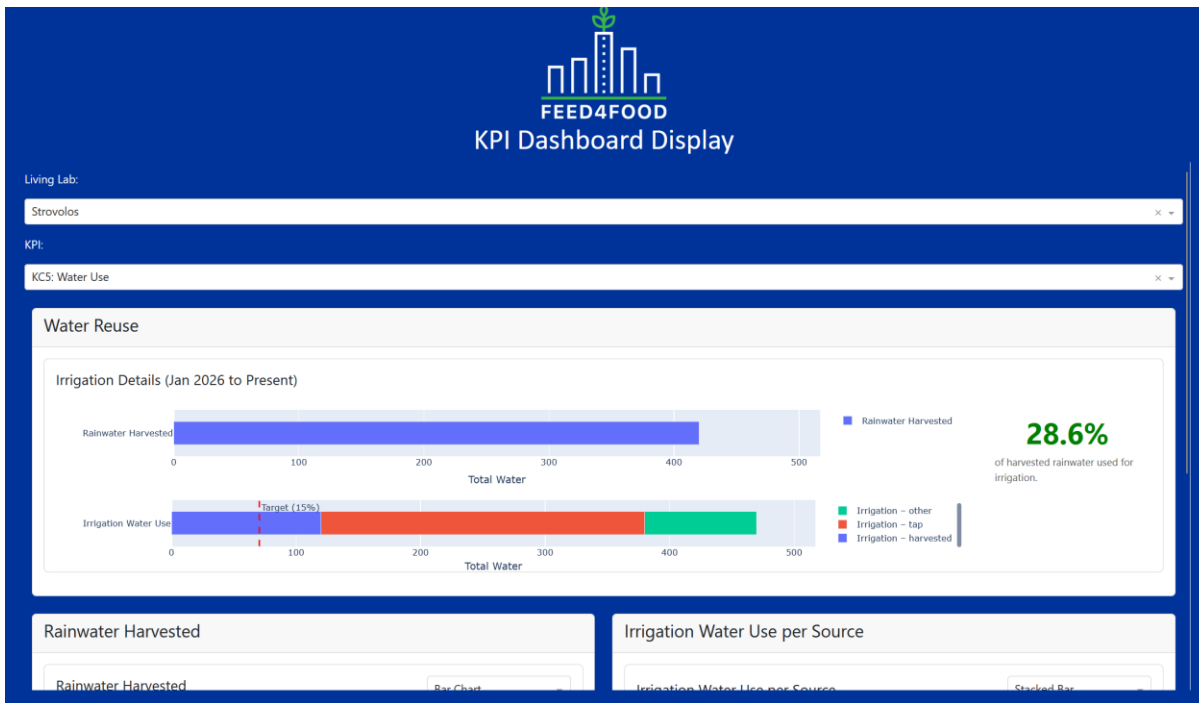
Product*	<input type="text" value="Cherry tomato - Ioannis"/>	Quantity*	<input type="text" value="3500"/>	<input type="text" value="g"/>	<input type="button" value="Delete"/>
Product*	<input type="text" value="Tomato - Ioannis"/>	Quantity*	<input type="text" value="8.4"/>	<input type="text" value="kg"/>	<input type="button" value="Delete"/>
Product*	<input type="text" value="Chicory - Ioannis"/>	Quantity*	<input type="text" value="4"/>	<input type="text" value="bunch"/>	<input type="button" value="Delete"/>
Product*	<input type="text" value="Dill"/>	Quantity*	<input type="text" value="1"/>	<input type="text" value="bunch"/>	<input type="button" value="Delete"/>
Product*	<input type="text" value="Eggplant - Ioannis"/>	Quantity*	<input type="text" value="1"/>	<input type="text" value="kg"/>	<input type="button" value="Delete"/>
Product*	<input type="text" value="Rocket - Ioannis"/>	Quantity*	<input type="text" value="5"/>	<input type="text" value="bunch"/>	<input type="button" value="Delete"/>
Product*	<input type="text" value="Coriander - Ioannis"/>	Quantity*	<input type="text" value="6"/>	<input type="text" value="bunch"/>	<input type="button" value="Delete"/>
Product*	<input type="text" value="Spring onion - Ioannis"/>	Quantity*	<input type="text" value="2"/>	<input type="text" value="bunch"/>	<input type="button" value="Delete"/>
Product*	<input type="text" value="Lettuce - Ioannis"/>	Quantity*	<input type="text" value="10"/>	<input type="text" value="head"/>	<input type="button" value="Delete"/>
Product*	<input type="text" value="Lettuce L. Biondo"/>	Quantity*	<input type="text" value="1"/>	<input type="text" value="head"/>	<input type="button" value="Delete"/>
Product*	<input type="text" value="Beetroot - Ioannis"/>	Quantity*	<input type="text" value="0.5"/>	<input type="text" value="kg"/>	<input type="button" value="Delete"/>
Product*	<input type="text" value="Green beans"/>	Quantity*	<input type="text" value="1"/>	<input type="text" value="kg"/>	<input type="button" value="Delete"/>

# Analyzing data

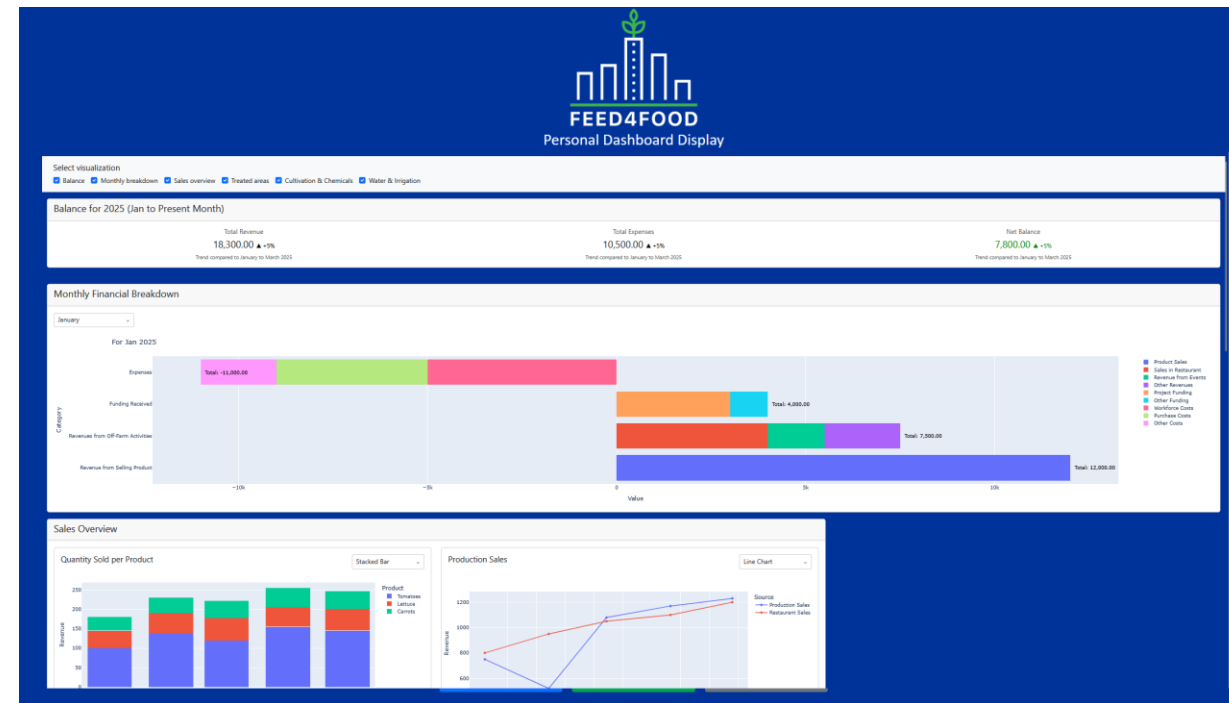


- Ongoing work
- Currently planned:
  - Calculations for the KPIs
  - Life Cycle Assessment tool
  - Forecasting
  - Trends

# Visualizing data



KPI dashboard



Personal dashboard



02

**DEMONSTRATION**

# Harvest monitoring



## KC3 – Nutritious food production

From entering harvest data to seeing the production over time and its nutrition profile

*Scenario:* As a LL responsible, I want to enter harvest data which includes a new type of vegetable never harvested before

KC3 – Nutritious food production					
Goal	Critical Success Factor	Key Performance Indicator		Metric(s)	Measure(s)
Eco-friendly urban farming	Achieve nutritious food production in an urban environment by 2026	Nutritious food production f (Production color profile, Production nutrition profile)		<ul style="list-style-type: none"> <li>Color profile of plant species cultivated f(MC1,MR3)</li> <li>Nutrition profile of the production f(MC1,MR3, MR5)</li> </ul>	MC1 - Production per product type MR3 - Characteristics per product MR5 - Daily calory and nutrient requirements for an adult
		Target	Action		
		All colors covered	Increase the diversity of plant varieties (number)		
	All relevant nutrients covered in sufficient quantities	Adjust the cultivation plan for quantities			

# Back-up video of the demonstration

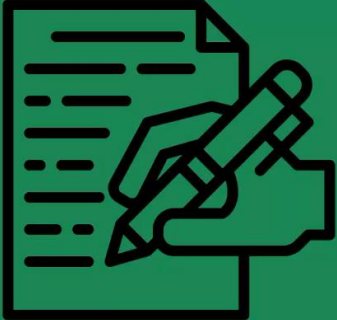


A screenshot of the FEED4FOOD dashboard portal. The background is a solid dark blue. At the top right, there is a small green button with the word "Feedback" in white. In the center, the FEED4FOOD logo is displayed in white, consisting of a bar chart with a green plant sprout on top of the tallest bar. Below the logo, the text "FEED4FOOD" is written in a large, bold, white, sans-serif font. Underneath that, the text "Welcome to the Feed4Food dashboard portal" is written in a smaller, white, sans-serif font. Below the welcome message, the text "Hi ioannis\_foundation!" is displayed in a very small, white, sans-serif font. At the bottom, there are two buttons: a green button with the text "Access the data portal" in white, and a grey button with the text "Log out" in white.

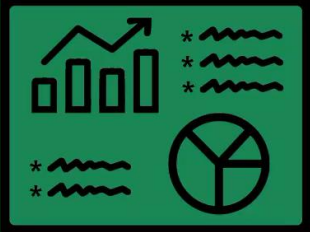
# Back-up video personal content



Select what you want to do



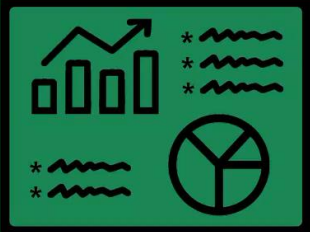
Add data  
[Select](#)



Go to the personal dashboard display  
[Select](#)



Go to the admin panel  
[Select](#)



# Personal dashboard content



What would *you* find useful to see in your personal dashboard?

Take a few minutes to think and answer the questionnaire

<https://forms.gle/B1a4zBMKQPGiG5Q17>



03

**FUTURE WORK**

# Ensuring usability



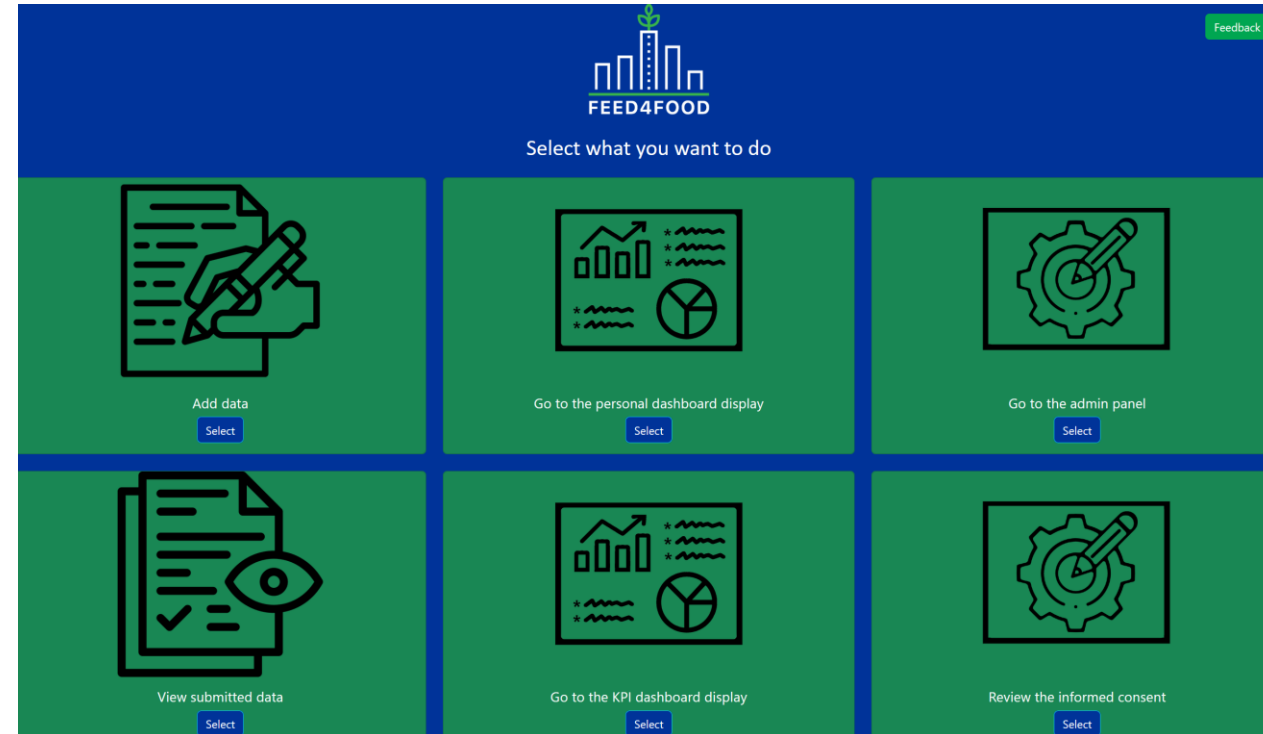
**The Knowledge Hub is only valuable if you are able to use it in a convenient manner**

- **Two different directions for going forward:**
  - Content: ensuring that the content is relevant through online focus groups
  - Form: ensuring that the website is easy to use through online usability studies
- **Create comprehensive documentation**
- **Your input is very valuable!**
  - Report bugs or issues you encounter using the website (send me an email!)
  - If something feels annoying, reach out to me!
  - The system is shaped by you, not the other way around!

# Adding new functionalities



- **Master student working on forecasting**
  - Would benefit from any additional data: enter your data or reach out if you know of datasets with harvest/agricultural data (even outside the LLs)
- **Integration of project tools**





# Thank you!

## k.m.tocze@vu.nl



[instagram.com/feed4food\\_eu/](https://www.instagram.com/feed4food_eu/)



[facebook.com/feed4foodeu/](https://www.facebook.com/feed4foodeu/)



[twitter.com/FFood87896](https://twitter.com/FFood87896)



[linkedin.com/company/feed4food/](https://www.linkedin.com/company/feed4food/)